



WORK REIMAGINED: HOW VISIONARY FIRMS ARE
PIONEERING THE NEXT ERA OF BUSINESS

BY AMIT PATEL
MYTHOS GROUP



WORK REIMAGINED: HOW VISIONARY FIRMS ARE PIONEERING THE NEXT ERA OF BUSINESS

By Amit Patel

ABSTRACT

In this article, we explore how visionary companies are fundamentally reshaping the future of work — revolutionizing decision-making, data sharing, team structures, and adopting emerging technologies like Artificial Intelligence (AI). Through detailed case studies, we'll uncover what a truly modern, agile workplace looks like, the challenges and barriers that are holding many organizations back, and how forward-thinking leaders can implement tangible, strategic changes today to foster innovation, drive growth, and maintain a competitive edge in an ever-evolving landscape.

"The future of work is not just about having the right technology; it's about empowering people to collaborate, innovate, and make smarter decisions faster. The key is fostering a culture of agility where teams can use emerging technologies like AI to build new business models."

Marc Benioff



INTRODUCTION

A recent McKinsey study revealed that companies with faster decision-making processes are [2.5 times more likely](#) to outperform their peers financially. In today's fast-paced landscape, speed and adaptability are no longer just advantages — they are critical to survival.

Forget about superficial perks like ping pong tables and free kombucha. The real future of work is being forged beneath the surface. The most successful companies are not simply adding benefits; they are overhauling the very way work is structured, executed, and optimized for a rapidly changing world.

Outdated models of rigid hierarchies, slow reporting cycles, and prolonged decision-making are being replaced by systems designed for agility, intelligence, and flexibility. These forward-thinking organizations are harnessing the power of AI, real-time data, and modular, cross-functional teams to make faster, smarter decisions and maintain a relentless competitive edge.

This article takes you inside the future of work: what it looks like, how it operates, and why companies that resist this transformation risk being left behind. Through compelling case studies and actionable insights, we'll break down what truly sets future-ready companies apart — and show how leaders can take immediate, practical steps to build agile, high-performance organizations today.

SHAPING THE FUTURE OF WORK: REDESIGNING THE WORK ENVIRONMENT FOR 2025 AND BEYOND

When most people hear "work environment," they typically envision office layouts, remote policies, or team culture. However, for forward-thinking companies, the term has evolved to encompass something far more profound. It now refers to the systems, processes, and tools that shape how work is executed across the organization.

This includes everything from decision-making processes to the seamless flow of data between cross-functional teams, the tools used for collaboration, and the agility with which teams can adapt to change. It is the invisible infrastructure that determines how fast, smart, and aligned a company can be in achieving its goals.

Traditional companies still rely on slow reporting chains, rigid hierarchies, and disconnected or outdated systems. These legacy models were designed for a world where predictability was valued over adaptability. But today's pace of change — driven by global competition, rapid innovation, and AI disruption—has rendered this approach unsustainable.

The modern work environment, by contrast, operates more like a living organism than a static machine. It is dynamic, data-driven, decentralized, and built around empowered decision-making. The most successful organizations today are those that invest in creating an intelligent internal architecture, one that fosters better thinking, faster action, and real-time responsiveness.

In the following sections, we'll explore this architecture in greater detail, breaking it down into four key pillars: decision flow, data infrastructure, AI-enhanced tools, and agile team design. These

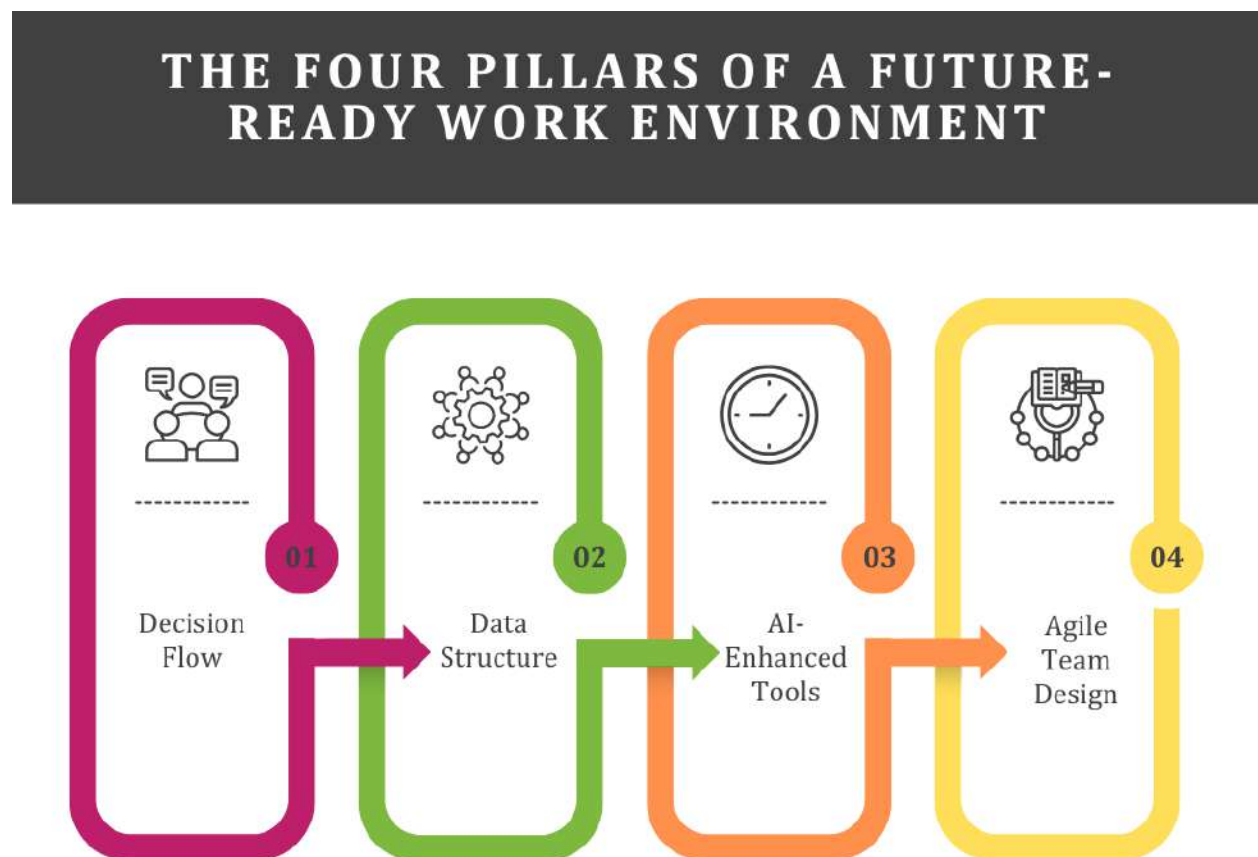


pillars are the foundation of a modern, high-performance work environment that positions companies to thrive in an ever-evolving landscape.

THE FOUR PILLARS OF A FUTURE-READY WORK ENVIRONMENT

Modern work environments are no longer constrained by rigid roles and static processes. Instead, the most successful organizations are redefining their structure around four critical pillars that foster speed, clarity, and adaptability: empowered decision flow, robust data infrastructure, AI-driven tools, and agile team design. These pillars form the bedrock of a dynamic, forward-thinking ecosystem that enables teams to act with agility and think with precision. *Figure 1* below illustrates these foundational elements, each playing a vital role in cultivating an environment where innovation thrives, decisions are made swiftly, and teams remain aligned and responsive to change.

Figure 1, The Four Pillars Of A Future-Ready Work Environment



1. Decision Flow: From Bottlenecks To Empowered Actions

In many organizations, decision-making is painfully slow. What should be a straightforward process—a budget approval, the green light for a new campaign, or the adoption of a new tool—

